

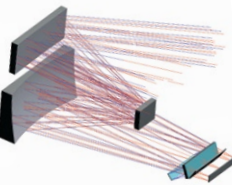
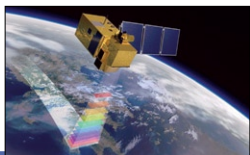
The basis of this cooperation was carried out with funding by the European Union.



SENTINEL-2 satellite is for optical Earth monitoring as the second member of the ASTRIUM GMES set (GMES: Global Monitoring for Environment and Security) where Sentinel unit runs a high resolution Multi-Spectral Imaging Instrument (MSI). Optical sensors ranging a wide spectrum (0.4-2.4 μm) at a resolution around 10 meters scan a 290 km wide zone simultaneously at a 786 km orbit. Light from each scanned 'dot' will face several sensors (13 channels), separate in the visible and infrared ranges. Positioning tools will drive optics to aim with 20m (on surface) precision.

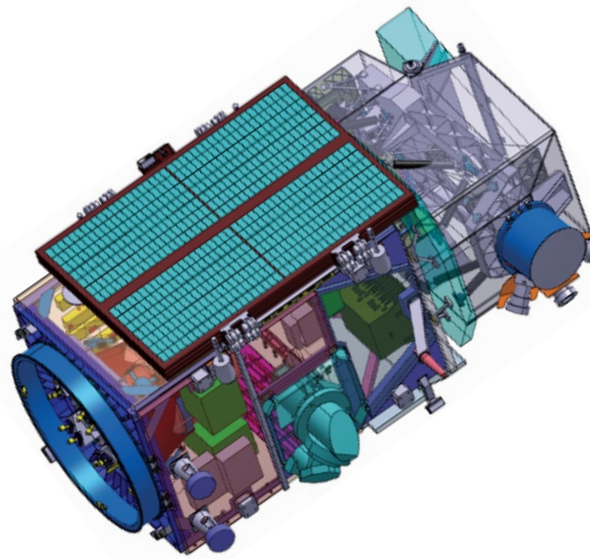
Two Sentinel-2 satellites synchronized (with constantly altered orbit) can cover most of land surfaces every five days, while cloudless clear record is probable in every 22 days. The ensemble analysis of the spectral channels will provide vital data on the atmosphere, waterfront movements, water and chlorophyll content of greenery, volcanic phenomena and human influence.

Creating and running Sentinel-2 rests on the joint success of engineers and scientists from several nations united by Astrium. Friedrichshafen gives place to platform-integration and test planning, the optical unit (MSI) is being built in Toulouse, the structure, thermal and electrical units in Spain. Subsystems and third level equipments are provided by a wide supplier net.



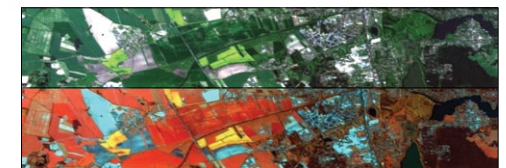
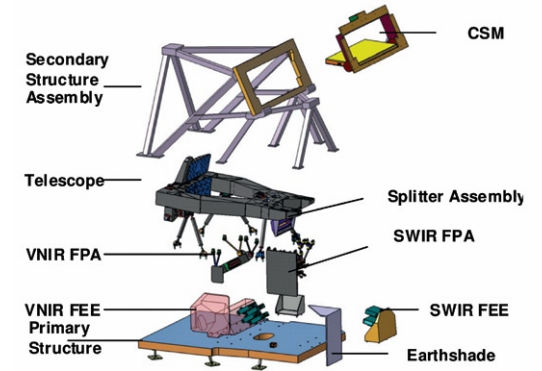
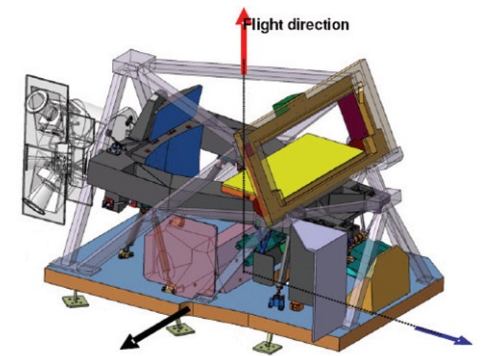
ASTRIUM SAS

This document has been produced with the financial assistance of the European Union. The views expressed herein can in no way be taken to reflect the official opinion of the European Union and/or ESA.



ADMATIS Ltd. designs and procures mechanical and thermal equipments for MSI such as brackets for electronics (with radiators), thermal shields and baffles. The twin-satellites will serve the ESA and EU after 2012 from seven to twelve years.

SENTINEL satellites allow global and dynamic Earth observing through virtual models that will have great effect on agriculture, silviculture, industry, transportation and energetics.



Pictures reference:
<http://gallery.astrium.eads.net/>
<http://www.icsconference2008.com/cd/pdf/>
<http://www.dlr.de/rd/Portaldata/28/Resources/dokumente/industrie/rfit09/>

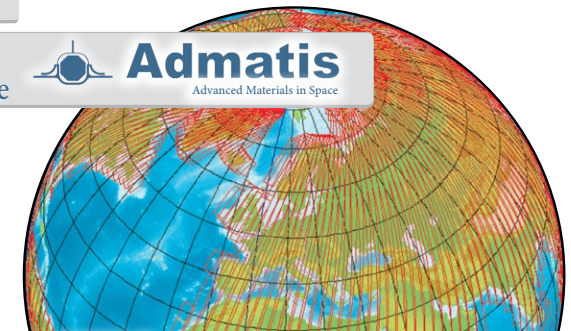


MSI – Metallic Mechanical & Thermal Hardware



SENTINEL-2

Global Monitoring for Environment and Security



CONTACT:

prof. Pal BARCZY • managing director • pal.barczy@admatis.com